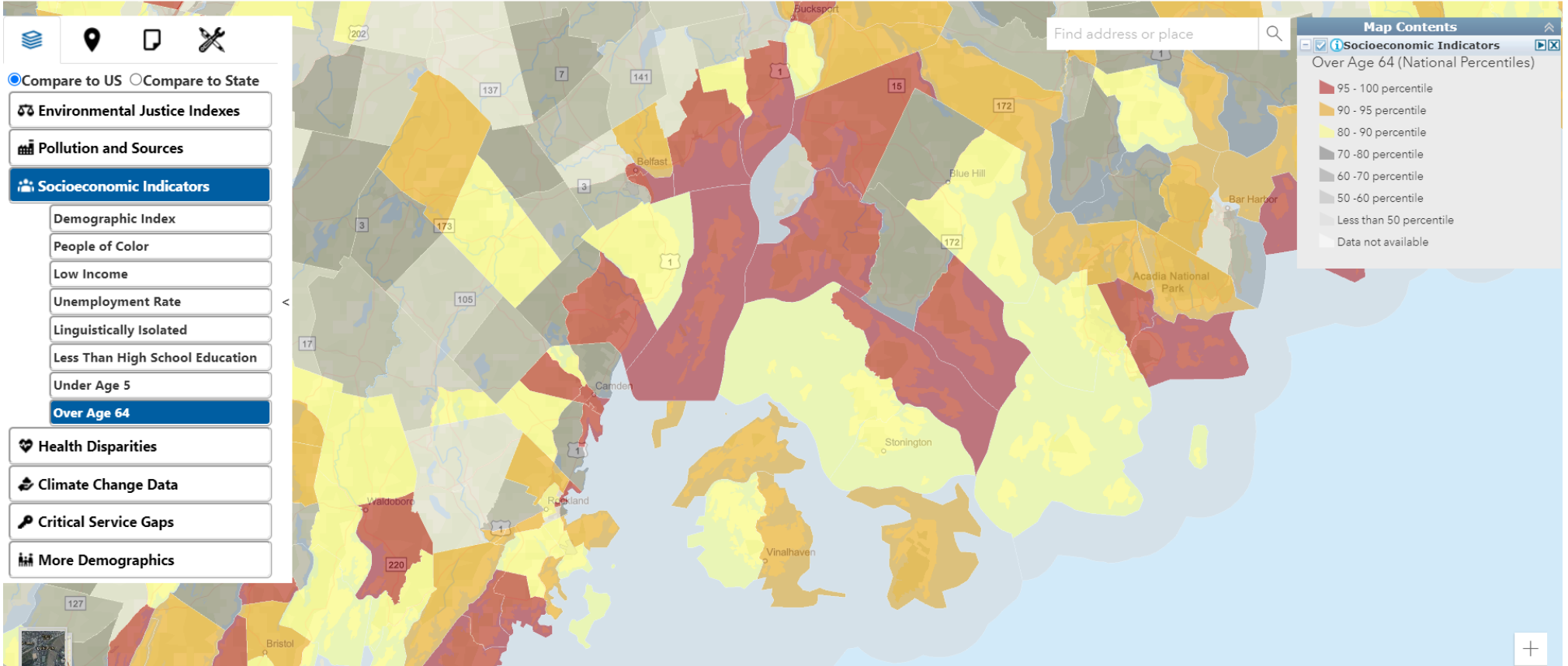
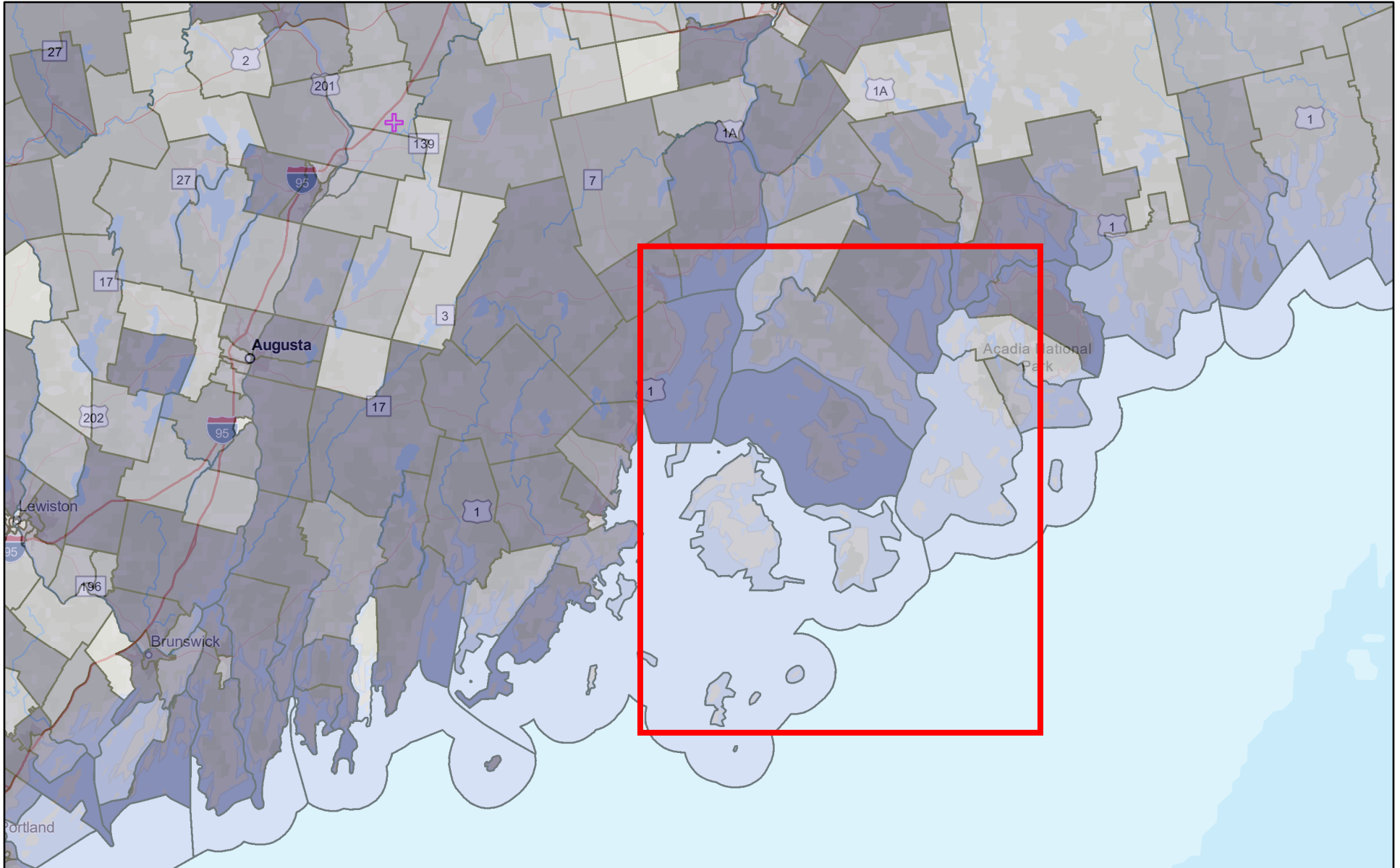


Population over 65 EPA EJ Screen

EPA EJScreen EPA's Environmental Justice Screening and Mapping Tool (Version 2.0)

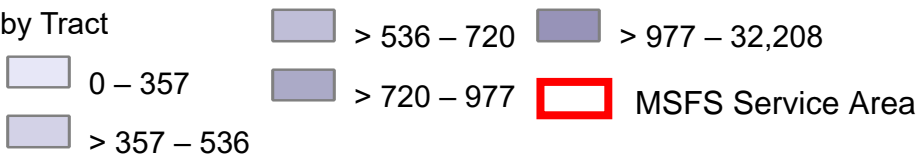
EJScreen 1.0 | EJScreen Website | Mobile | Glossary | Help



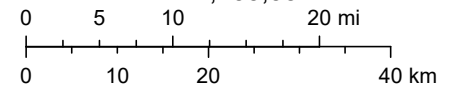


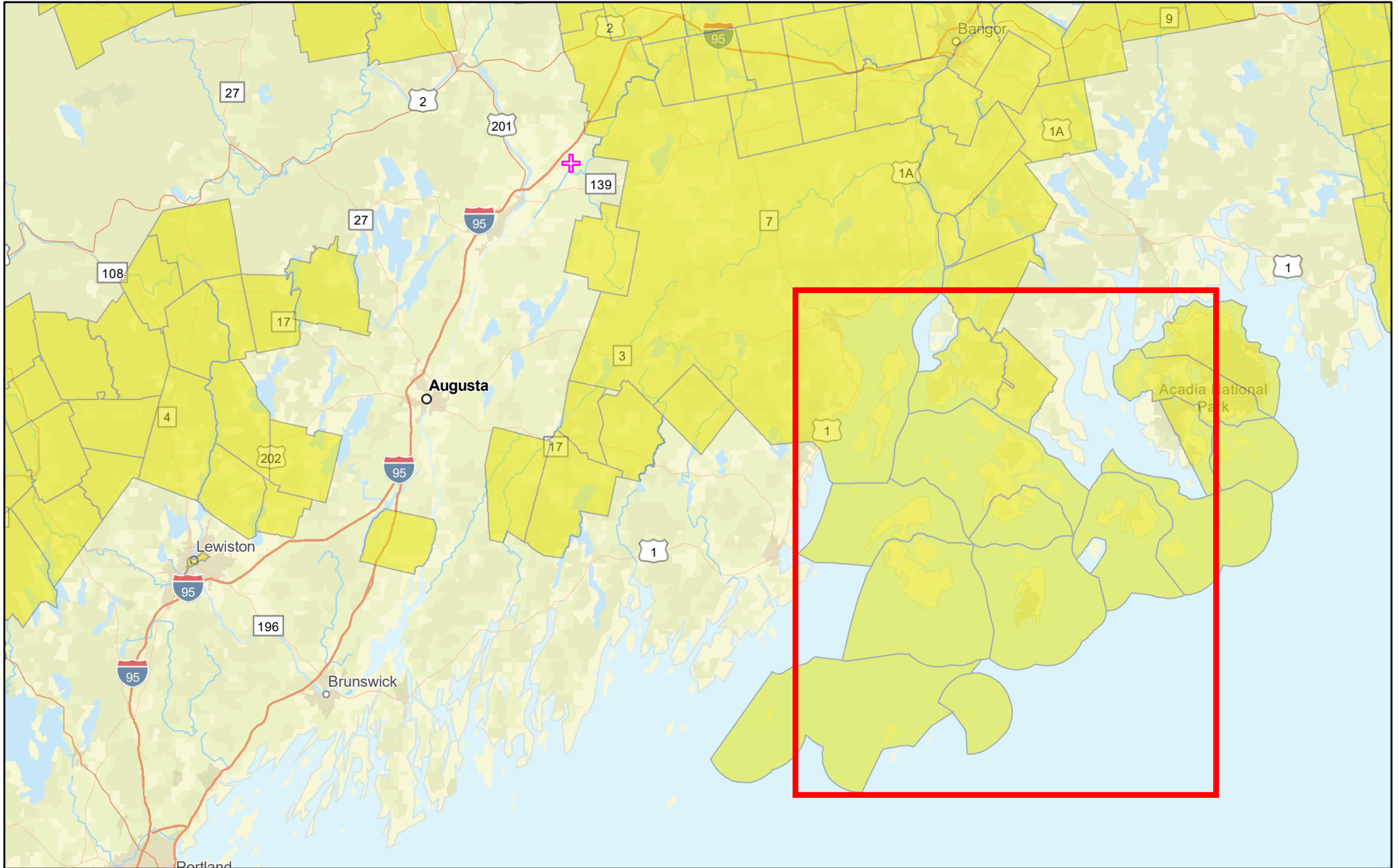
8/23/2022

by Tract





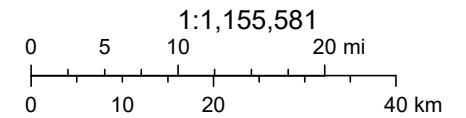
1:1,155,581





8/23/2022

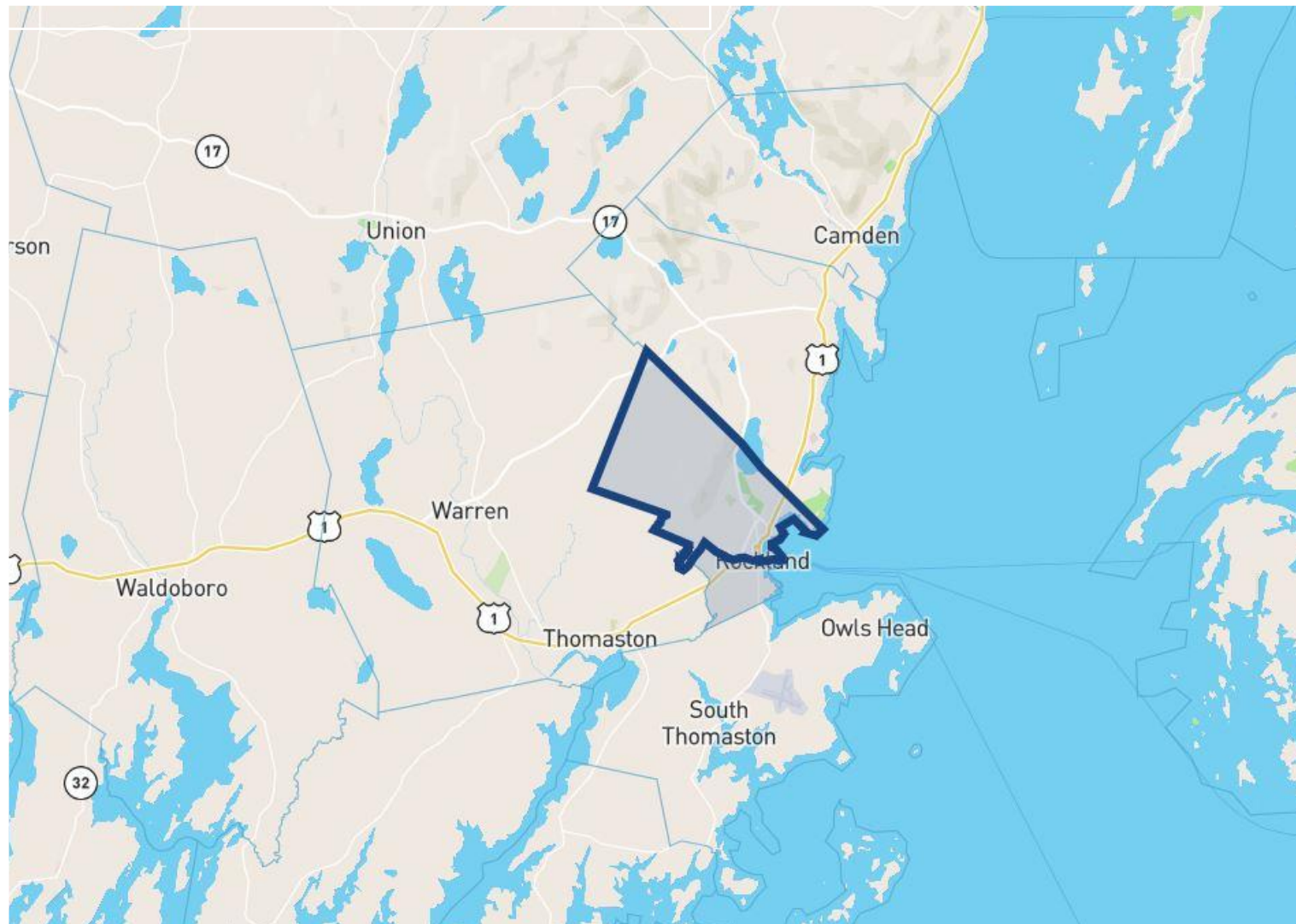
-  MSFS Service Area
-  Medically Underserved



Justice40 Disadvantaged Communities

Census Tracts 23013970700, 23013970600

Maine State Ferry Service Annual Operating Expenses Assistance



Clean energy and energy efficiency



At or above at least one threshold? **Yes**

Energy burden
Average annual energy costs divided by household income
90th \uparrow
above 90th percentile

PM2.5 in the air
Fine inhalable particles, 2.5 micrometers or smaller
3rd \downarrow
below 90th percentile

AND

At or above both associated thresholds? **Yes**

Low income
Household income is less than or equal to twice the federal poverty level
65th \uparrow
above 65th percentile

Higher education non-enrollment
Percent of the census tract's population 15 or older not enrolled in college, university, or graduate school
90% \uparrow
above 80th percent

Health Disadvantaged Community - Penobscot Bay

Transportation Disadvantaged Census Tracts (Historically Disadvantaged Communities)

